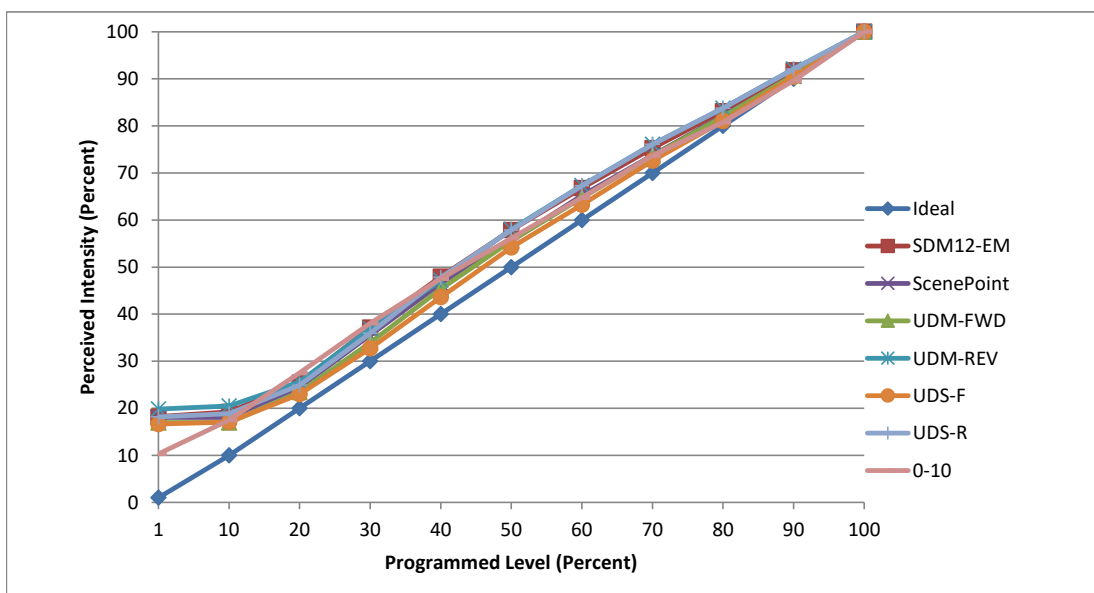


Manufacturer Tech Lighting
Model E3SFF-LH9304AI
Description 3" static white recessed LED downlight
Driver Tech Lighting PTB20W-0400-38-VCC (supplied, per fixture)
Nominal Power (W) 15.2
Dimming Control Forward and Reverse
Product Range Element Recessed Downlights
Test Date 28 September, 2022

Dimmer Tested Against:	SDM12-EM	ScenePoint	UDM-FWD	UDM-REV	UDS-F	UDS-R	0-10
Commercial Pass/Fail	Pass	Pass	Pass	Pass	Pass	Pass	Pass
Residential Pass/Fail	Pass	Pass	Pass	Pass	Pass	Pass	Pass
Best-Fit Power Profile:							
Minimum ON	9.5	13.3	12.3	13.5	15	11.5	1.4
Maximum ON	73.5	77	76.4	71	78	68.3	7.5
Adjust	100	100	100	100	100	100	20
Light Output Range (vs. non-dimmed)							
Maximum (Perceived), 120V	95.7%	95.2%	94.8%	95.3%	94.9%	95.0%	94.7%
Minimum (Perceived)	17.4%	17.2%	16.1%	18.9%	15.8%	17.3%	9.8%
Minimum (Measured)	3.0%	3.0%	2.6%	3.6%	2.5%	3.0%	1.0%

Linearity Curves (Best-fit Power Profile Applied):



jwm

Observations: Test performed in three unit configuration.
 Fixtures showed large shelf on low end; Minimum On raised high to compensate.
 Fixtures took time to settle on dim level after dimming stopped on Vantage hardware.